



Langfang Olan Glass Beads Co., Ltd

www.cnglassbead.com

sales@cnglassbead.com

All Weather Beads

Introduction

Production introduction

New product that made by our company , All weather Beads can improve road safety grade, It's the normal reflective beads upgrade products.

Most Efficient Optics for Liquid-applied Markings

Each all-weather beads is a complete pavement marking optical system comprised of microcrystalline beads, binder and pigments.

Easily Installed by Double-drop Systems

As the first drop of a double-drop system, the all weather beads

Provide visibility to motorists in both wet and dry conditions.

They are effective as either new marking applications or as part of a maintenance marking application.

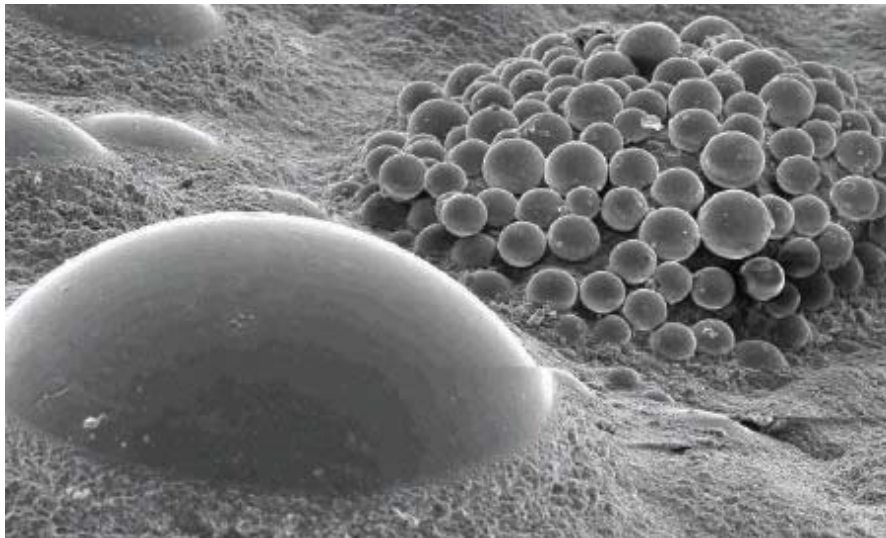


Langfang Olan Glass Beads Co., Ltd

www.cnglassbead.com



Amorphous glass—no microstructure



Scanning electron microscope (SEM)

photos of beads after sandblasting

Microcrystalline ceramic beads showing

microcrystalline structure

Factory Optimized

Bonded core elements consist of microcrystalline ceramic beads

embedded on a center core to provide optimal performance in all weather



Langfang Olan Glass Beads Co., Ltd

www.cnglassbead.com

sales@cnglassbead.com

conditions



Series AWW

White Line All Weather beads



Series AWY

Yellow Line All Weatherbeads

True Reflected Color,

Superior Visibility



Yellow Elements—Yellow Beads

Standard glass beads are clear, putting the entire burden for color performance on the binder . Olan incorporates yellow microcrystalline ceramic beads in its yellow elements to improve reflected color.

Color Recognition Day and Night—Wet or Dry

Most pavement markings have acceptable daytime color. Conventional yellow markings use clear glass beads which often result in a washed out appearance at night. Olan's yellow beads improve nighttime color, making the markings conspicuous at any time of day or night.



Langfang Olan Glass Beads Co., Ltd

www.cnglassbead.com
sales@cnglassbead.com

Optimized Index for Wet and Dry

For optimum performance under dry conditions, Olan elements feature 1.9 refractive index micro crystalline ceramic beads.

Olan's all-weather optics include ultra-high, 2.4 refractive index microcrystalline ceramic beads. The high refractive index results in good measurable wet reflectivity, the highest practical level achieved to date.

The 2.4 refractive index microcrystalline ceramic bead has the same microcrystalline structure and level of toughness found in lower index microcrystalline beads.

As a system, Olan's all-weather optics have dry reflective beads at peak efficiency, and wet reflective beads much higher in efficiency than any other commercial beads.

Products Series

Name	Series	Item No.	Spec(mm)	Product performance	Notes
AWWseries White line all weather beads	AWWC	AWWM0610C	0.6-1.0	Reflective very well in Dry and wet condition	We can produce any Spec as customer requirements
		AWWM0812C	0.8-1.2		
	AWWD	AWWM0610D	0.8-1.0	Reflective higher in Dry condition	
		AWWM0812D	1.0-1.2		
	AWWM	AWWM0610M	0.6-1.0	Reflective higher in Wet condition	
		AWWM0812M	0.8-1.2		
AWY Series Yellow line all weather beads	AWYC	AWY0610C	0.6-1.0	Reflective very well in Dry and wet condition	We can produce any Spec as customer requirements
		AWY0812C	0.8-1.2		
	AWYD	AWY0610D	0.8-1.0	Reflective higher in Dry condition	
		AWY0812D	1.0-1.2		
	AWYM	AWY0610M	0.6-1.0	Reflective higher in Wet condition	
		AWY0812M	0.8-1.2		



Langfang Olan Glass Beads Co., Ltd

www.cnlassbead.com

sales@cnlassbead.com



For technical information or to learn more about All weather beads Or other Glass beads and services, visit www.cnlassbead.com or contact by sales@cnlassbead.com

Add. ROOM 1014,10TH FLOOR,UNIT 1,BUILDING 2,NEW WORLD CENTRE,GUANGYANG DISTRICT,LANGFANG CITY

Tel.: +86-316 2013621

Mob.: +86-151 0066 3145

Fax.: +86-316 7166 168

Below pic is the difference between normal glass beads and All weather beads in fine weather.

The straight line is normal glass beads and the other is all weather beads.



Below pic is the difference between normal glass beads and All weather beads in wet weather.

